

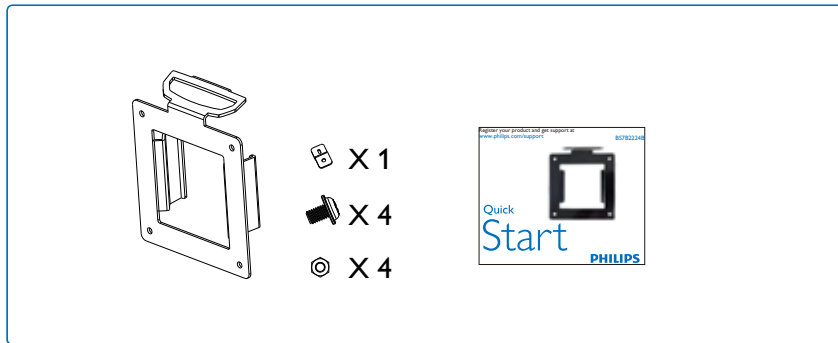
Register your product and get support at  
[www.philips.com/support](http://www.philips.com/support)

BS7B2224B



# Quick Start

**PHILIPS**



Version: M7BS7B2224Q1L



Printed in China

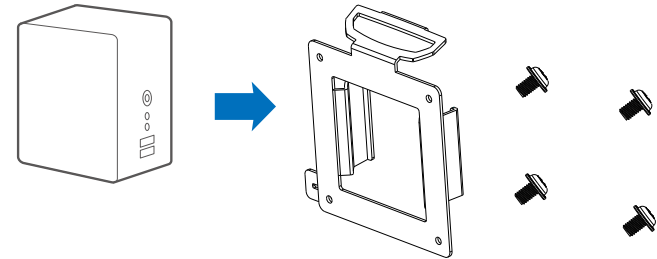


F41G78D181377A

Compatible with Philips Height Adjustment Base of 223S7,  
243S7

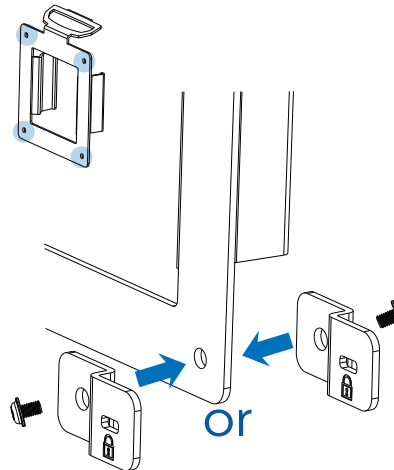
1

Align holes of VESA compliant device with those of bracket and screw up with the screws provided.



2

Kensington Lock.



3

Slide down the bracket with mounted device into Philips Height Adjustment base.

